



## Networking Hitachi LCD Projectors

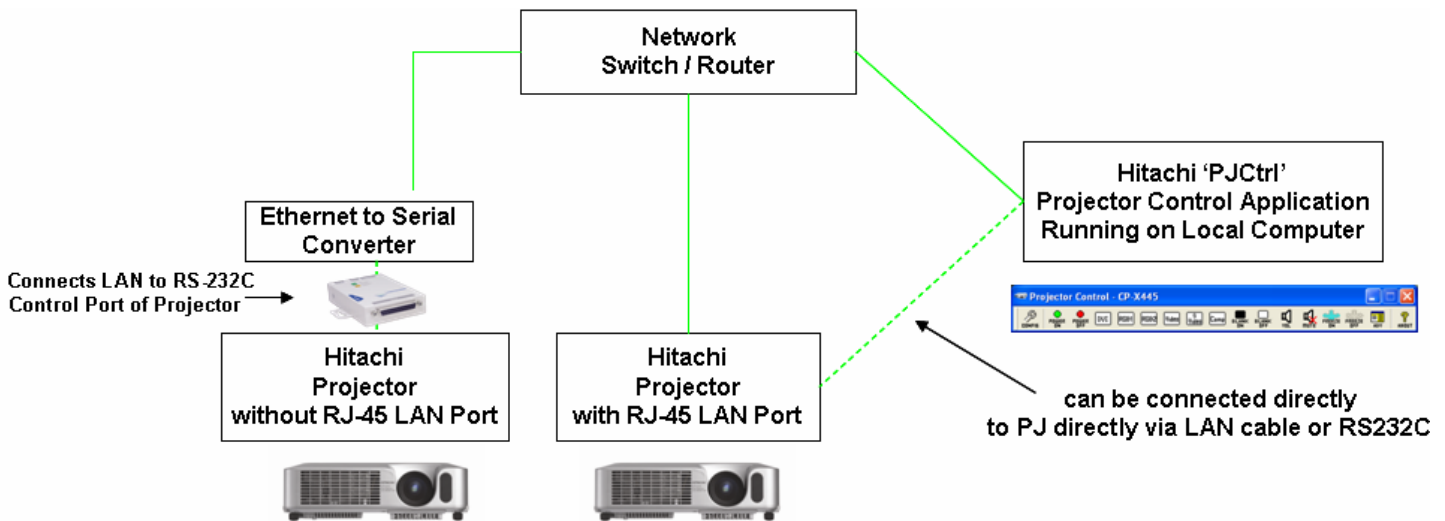
### Hitachi Projector Control ('PJCtrl') v4.00



Hitachi's Projector Control Application ('PJCtrl') allows a user to control the functions of their Hitachi LCD Projector via their desktop or laptop PC.

Since all of the functions for controlling the projector are on the PC, PJ Ctrl can help to reduce costs associated with lost remote controls, battery replacement, etc...

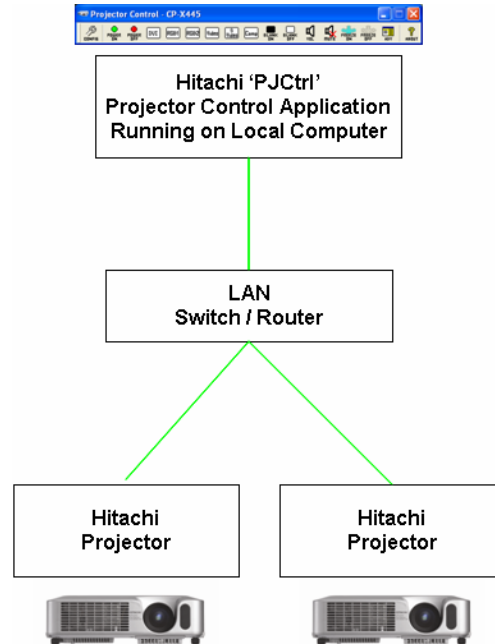
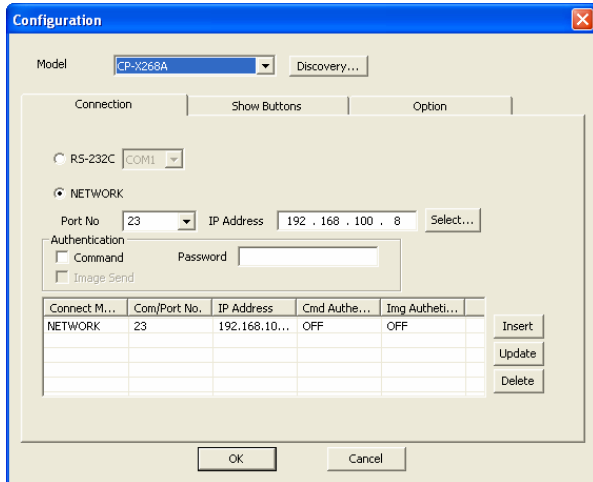
Below is a diagram showing a typical configuration using Hitachi PJCtrl & Hitachi PMan (Projector Management Application)





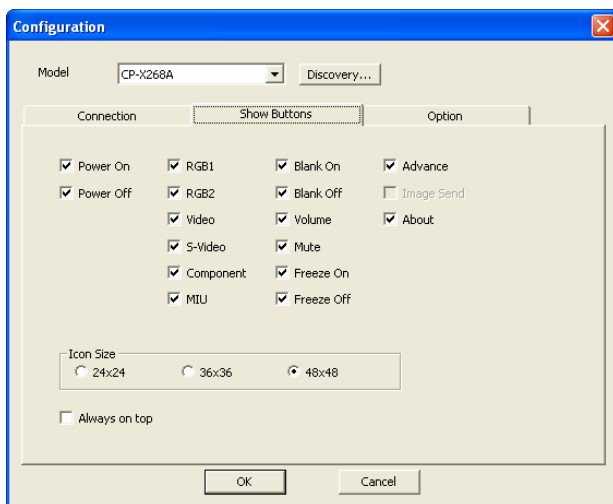
## Individual and Multiple Projector Control

Hitachi's LCD Projector Control Application can control up to five of the same Hitachi Model LCD Projectors at the same time, which can be useful in an installation where multiple projectors showing the same content need to be switched together:



## Customizable Interface and Controls

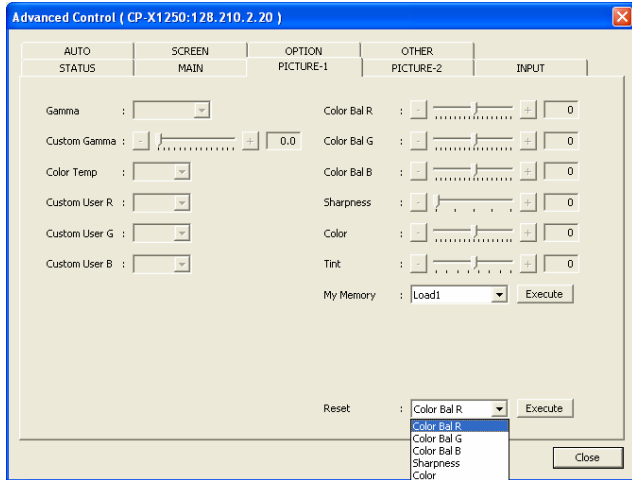
Hitachi's LCD Projector Control Application can also be configured to suit the user's individual preferences & needs:





### Advanced Control

Hitachi's LCD Projector Control Application has an Advanced Control area that is ideal for installation, maintenance, etc...



### Hitachi Projector Compatibility

Hitachi's LCD Projector Control Application is compatible with the following Hitachi LCD Projector Models:

Hitachi LCD Projectors with RJ-45 LAN Port	
CP-S245	CP-X443
CP-SX1350	CP-X445
CPX2	CP-X505
CP-X205	CP-X605
CP-X255	CP-X608
CP-X256	CP-X1200
CP-X265	CP-X1250
CP-X268A	ED-X8255
CP-X305	
Hitachi LCD Projectors without RJ-45 LAN Port*	
CP-RS55	CP-X300
CP-RS56	CP-X328
CP-RS57	CP-X340
CP-RX60	CP-X345
CP-RX61	CP-X430
CP-S210	CP-X440
CP-S220	CP-X444
CP-S225	CP-X880
CP-S235	CP-X885
CP-S240	CP-X990
CP-S318	CP-X995
CP-S335	CP-X1230
CP-S420	ED-S3170
CP-SX5600	ED-S3350
CP-X200	ED-X3270
CP-X250	ED-X3280
CP-X251	ED-X3400
CP-X253	ED-X3450
CP-X260	

\*requires Ethernet to Serial Converter or RS-232C Connection

- PJCtrl v4.00 minimum system requirements
- Windows 2000 Professional SP4 or later
  - Pentium III 500Mhz or higher
  - 128MB RAM
  - 20MB Free space on HDD
  - LAN Port (RJ-45) or RS-232C Port

Hitachi's LCD Projector Control Application is free of charge from the [Software Downloads](#) section of the [www.hitachi.us](http://www.hitachi.us) web site

For a complete line up of Hitachi LCD projector models, please visit [www.hitachi.us/digitalmedia](http://www.hitachi.us/digitalmedia)

For more information on 3LCD technology, please visit [www.3lcd.com](http://www.3lcd.com)